

Technical Data Sheet

BMC Shrink Compensated GP Void Filler

DESCRIPTION

BMC's high performance **GP Void Fill Grout** is an Australian designed and manufactured product.

Blended using a range of premier cementitious materials, **BMC GP Void Fill Grout** is supplied as a ready to use powder that requires only the addition of potable water to create a multi-purpose void fill grout.

RECOMMENDED USES

BMC GP Void Fill Grout can be used for a range of applications including:

- Civil
- Construction
- Void Fill
- Annulus Grouting

FEATURES & BENEFITS

BMC Void Fill Grout has the following features:

- Extremely High strengths achieved
- Shrinkage compensated
- Pumpable
- Fibre reinforced
- Low Heat



PERFORMANCE DATA

Product	BMC Void Fill Grout
W:P	0.5
Time	MPa
7 d	32.5
28 d	69.00

*Typical values to AS1012.9 at 23°C (+/-2°C) by NATA accredited laboratory. Sample Code: C0a5116.

Estimated Yield = 16 - 18 l per 20 kg bag at W:P=0.5

Variations are to be expected as a result of changing site conditions, weather, quality of preparation, level of expertise during application & curing.

APPLICATION

BMC Void Fill Grout only needs the addition of potable water at the recommended water:powder ratio of 0.5 to create a pumpable grout.

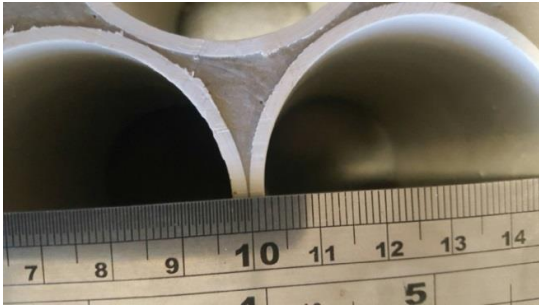
The mixer is filled with water at a rate of 9 litres per 20 kg of **BMC Void Fill Grout**.

Once the mixer is filled with the correct amount of water add half the powder and mix until fully dispersed. Finally, add the second half of powder slowly until the grout forms a consistent, lump-free mixture.

As this highly specialised blend requires the grout to be continuously mixed, ensure that the mixing method and labour is sufficient to enable continuity of the operation.

CLEANING

All grouting equipment, including pump and grout lines, must be cleaned with water immediately after grouting.



STORAGE AND SHELF LIFE

If **BMC Void Fill Grout** is kept in its original packaging in a dry environment, shelf life of 12 months is to be expected. This time may be reduced if the product is subject to high temperatures or humidity. Bulk bags are expected to remain covered in plastic until use.

PACKAGING

BMC Void Fill Grout is packaged in **20 kg** moisture resistant bags or **1.0/1.2** tonne bulk bags. Other packaging options are available on request. Packing slips will state batch and manufacturing date.

HEALTH AND SAFETY

- Avoid contact with skin and eyes. Wear suitable protective clothing.
- Avoid inhalation or ingestion.
- In case of contact with skin or eyes, rinse immediately.
- Seek medical attention immediately if ingested.

Please refer to the relevant SDS for further information.

Disclaimer

The technical information and application advice summarised in this document is based on our current practical knowledge. Intending users should read this TDS as well as the SDS and consider the information provided in the context of how the product will be handled and used in the workplace, including in conjunction with other products. We accept no responsibility for loss or injury caused by improper use, incompetent preparation or ordinary wear and tear. Our responsibility for product sold is subject to our standard terms and conditions; no warranty expressed is implied as BMC has no control over mix design, handling or use of the product. BMC retains the right to update this TDS without prior notice.